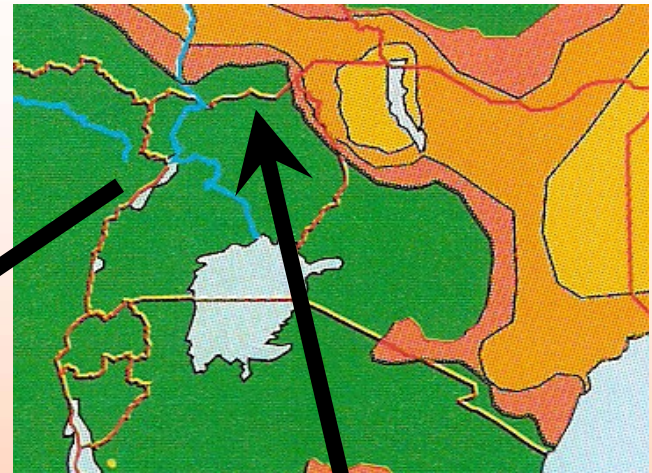
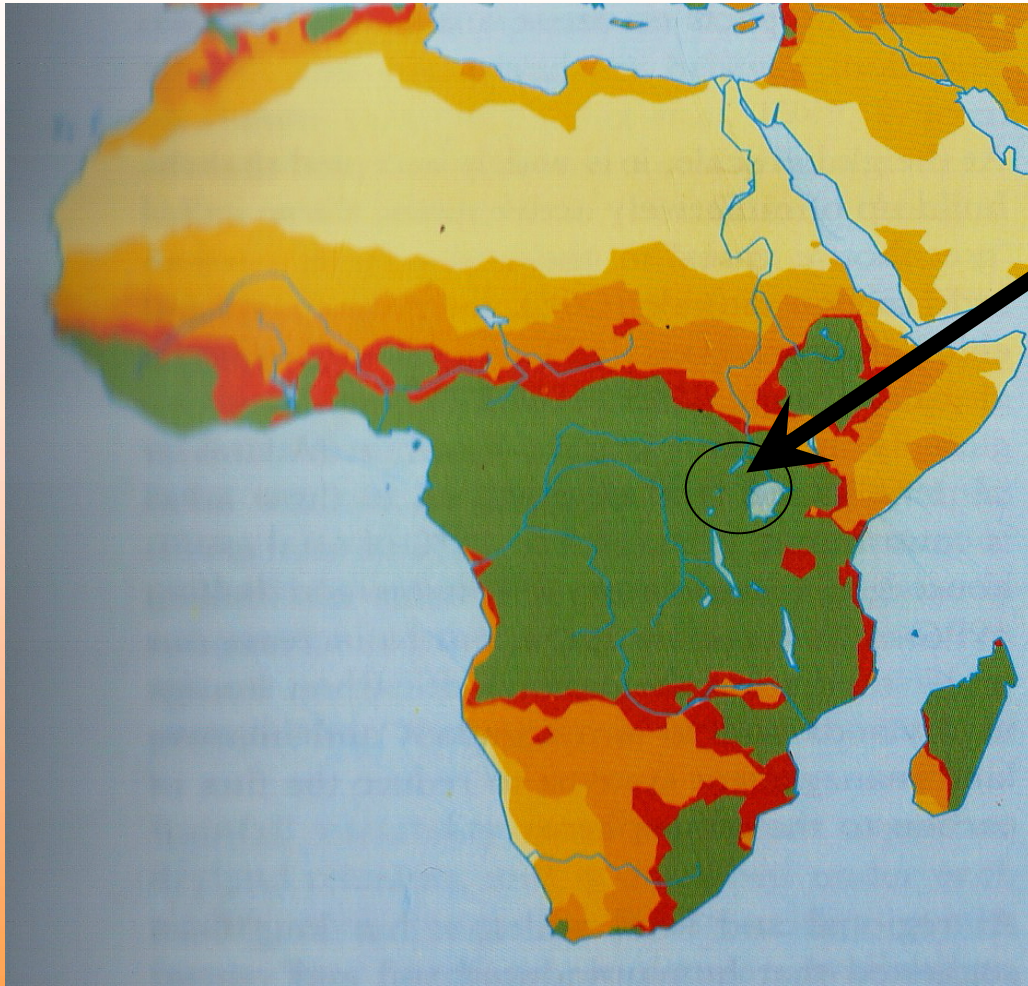




**THE WAR THE WORLD IS LED TO IGNORES**

# Where is Northern Uganda?



# BACKGROUND

The United Nations Assn (UNA) of UK/Uganda and United Nations Office for Co - ordination of Humanitarians Affairs (UN OCHA) sent a team to Northern Uganda to explore and identify:

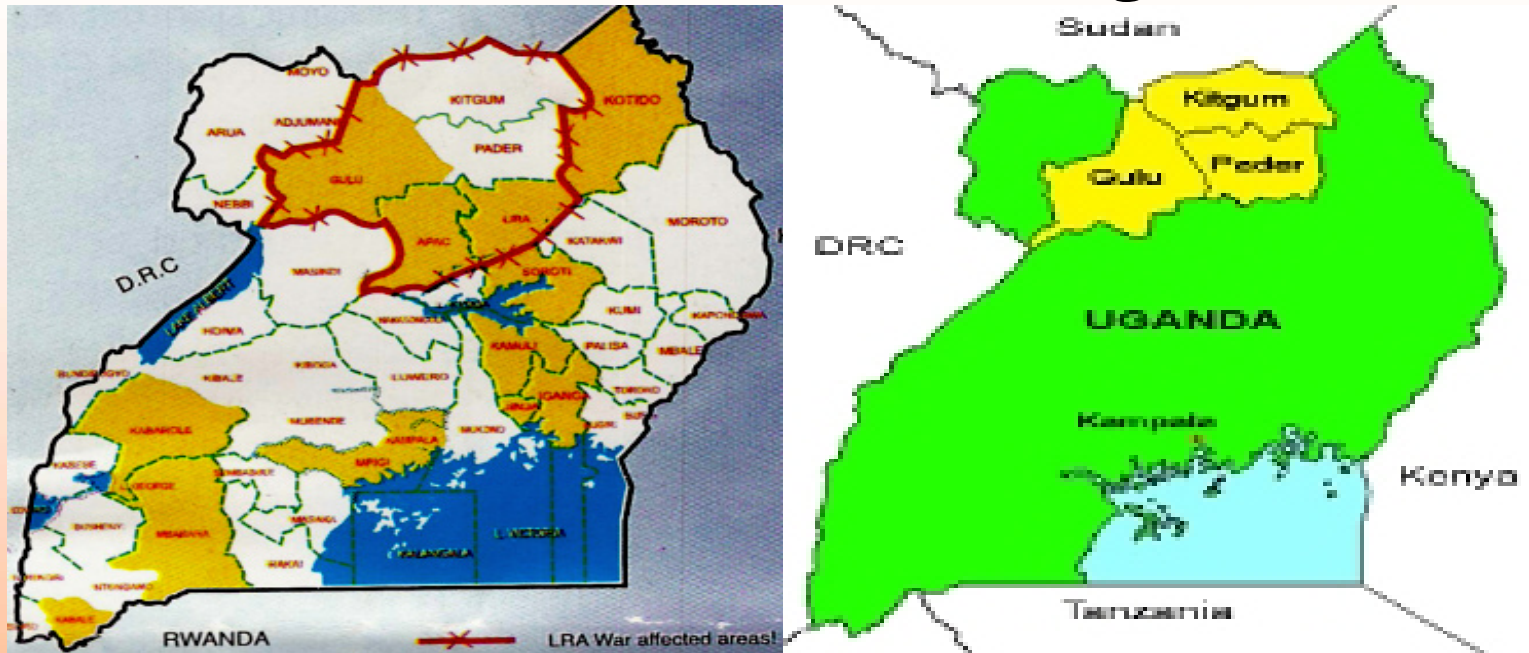
- a) The immediate need- who is doing what, what are the gaps and what roles could be played by other organisations.
- b) Look at the other possible options to bring the war/violence to an end and find out what roles could be played and compromises that could be made by the local people of Northern Uganda, the Uganda people, Uganda government, the rebel group and international community to ensure a lasting peace is brought to bear in that region.
- c) What plan of action could be put in place to ensure effective reconstruction/rehabilitation.

What they discovered was mind blowing. The deep sense of shock which they experienced during the visit which was made to Kitgum and Gulu has left a lasting impression on the team.

David Luwum who led the team is originally from the war torn area of Northern Uganda, now an active member of UNA-UK Nottingham Branch, together with Malcolm Harper the former Director of UNA-UK, other branches of UNA-UK and other organisations, formed an umbrella organisation call Friends Of Northern Uganda (F.O.N.U) to coordinate the linking of other international organisations with the local groups on the ground, raising fund and awareness to help address key issues within the war torn areas of Northern Uganda.

*If you want to know a bit more about David Luwum, please go to Google web site and type David Luwum*

- **The United Nation Association (UNA) Visit the war affected areas of Northern Uganda:**



Recently, the Ugandan political definition of the Northern Uganda takes into account all those districts that have suffered under Lord's Resistance Army (LRA) armed conflict despite the fact that they are categorized statistically to be in the Eastern region.

Hence, the North is also politically defined to include the five districts in the Teso region in addition to the 13, bringing the total to 18 districts. The five districts in the Teso region are Soroti, Katakwi, Kumi, Kaberamaido and Pallisa.

While the war has long subsided in the Teso and many other regions of Northern Uganda, it is still raging in other parts of the North, particularly the districts of Gulu, Kitgum and Pader in Acholiland.

- **The local government leaders welcomed the team to the district of Kitgum, thanked them for their new approach of talking with the local people first on what needs doing rather than imposing a pre-planned strategy.**



- **They expressed various issues, enlightened the team with background information on the war, current situation, gave protection and opportunity for the team to visit various groups and places in the area.**

# SAMPLE OF OTHER LOCAL GROUPS WE MET

## Acholi Religious Leaders- Peace Initiative (ARLPI):



The ARLPI comprises Christians and Muslims was formed in 1996 due to the massive devastating effect of the war on the people.

The initial aim of this group was to try to spread understanding of the war “that the war is NOT an Acholi war against the government of Uganda,” but Acholi people are in fact the real victims. Therefore they advocate a mediated peaceful solution to the war

# *Kitgum Women Bee-keepers Association*



*This group was formed in February 1995 The founder members realised that they could tackle the problems of looking after the orphans and under development through “self help”.*

*They are farmers and active and retired civil servants.*



*They have pooled resources and to date have 20 members. They are training others in bee keeping skills, but are hampered by lack of finance and resources.*

# Women's organizations



**Over 40 representatives of women's organizations, some covering the whole District and others representing groups within the District at county or sub-county level.**

**It is these women who bear the major brunt of the suffering with so many extra domestic burdens being imposed on them.**

**Women of all ages are in the frontline of suffering and injustice in Northern Uganda.**

# *Child Salvage Initiative*



**We were taken a short way out of Kitgum to visit the embryonic site of the Child Salvage Initiative, which is setting up a training centre for young people to learn such skills as tailoring, brick making and bricklaying, carpentry, motor mechanics and vehicle driving.**

**Its premises are very simple but it has the potential to play a key role in helping young people in Kitgum and Pader Districts where it plans to be operational.**

**The Chairperson of the Initiative, Mr. Okello Donasiano, is clearly deeply committed.**

## *Kitgum Concerned Women's Association (KICWA), :*



**Returned Abductees at Kitgum Concerned Women's Association**

**We visited the reception centre for returned abductees being run in Kitgum which was founded by a group of volunteers in 1998. To date some 2,700 children have benefited from KICWA's services.**

# FORMERLY ABDUCTED AND RETURNED TERIFIED CHILDREN





FOR MORE DETAILED INFORMATION PLEASE CLICK CONTACT:

[MR. D. LUWUM](#)